

# MONTHLY MEMBERSHIP PROGRESS REPORT

District 325 D

Results as of: 2/29/2024

GMT:

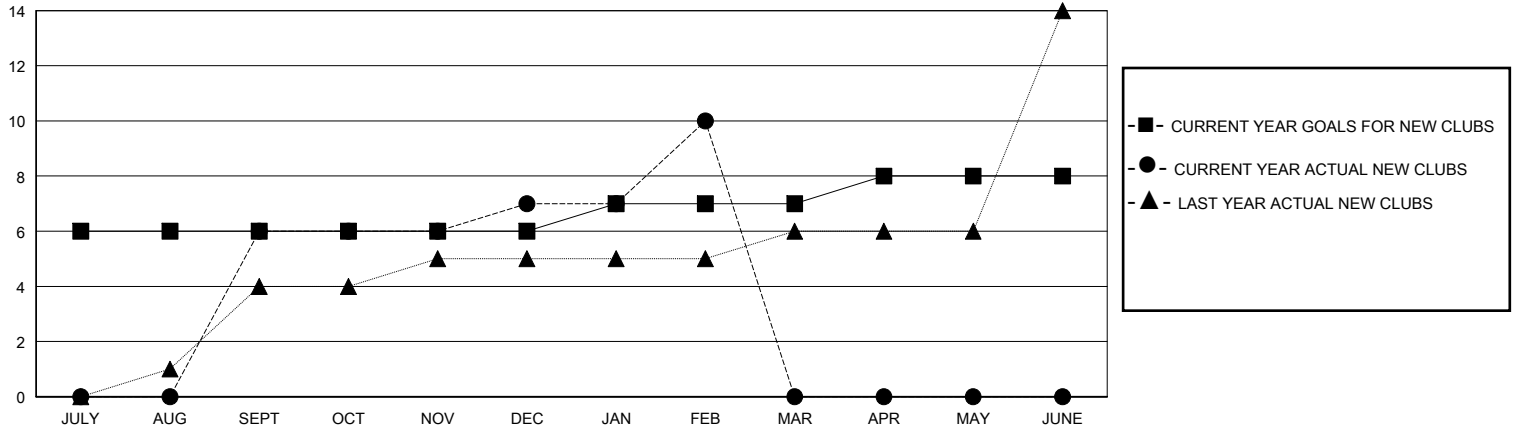
LOCATION NEPAL

GMT CA

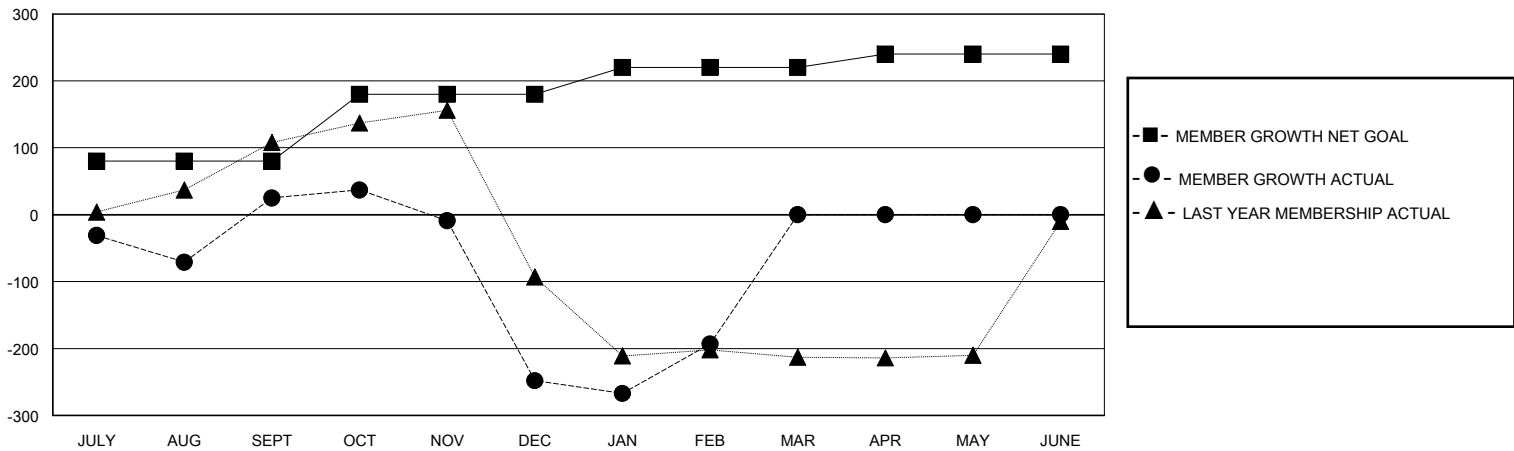
Clubs			
RESULTS FOR 2023-2024			
QUARTER	NEW CLUB GOAL	NEW CLUBS	DROPPED CLUBS
JULY/AUG/SEPT	6	6	5
OCT/NOV/DEC	0	1	4
JAN/FEB/MAR	1	3	3
APR/MAY/JUNE	1	0	0

Members			
RESULTS FOR 2023-2024			
QUARTER	MEMBER GROWTH NET GOAL	MEMBER GROWTH ACTUAL	DROPPED MEMBERS ACTUAL (including transfers)
JULY/AUG/SEPT	80	219	190
OCT/NOV/DEC	100	53	326
JAN/FEB/MAR	40	118	60
APR/MAY/JUNE	20	0	0

GOALS AND ACTUAL NEW CLUBS CUMULATIVE



GOALS AND ACTUAL MEMBERS CUMULATIVE



<b>DROPPED CLUBS: 12</b>	47 CLUBS OF 86 ADDED 1 OR MORE NEW MEMBERS	<b>GENDER DISTRIBUTION</b>	
		MALE 1,313 (67.47%)	FEMALE 634 (32.58%)
<b>DROPPED MEMBERS</b>		<a href="#">CLICK HERE FOR CUMULATIVE MEMBERSHIP DATA</a>	TOTAL FAMILY UNIT MEMBERS 1,289
DECEASED 14	CLUB CANCELLED 246		FAMILY MEMBERS PAYING HALF DUES 862
OTHER 316	TOTAL 576		